



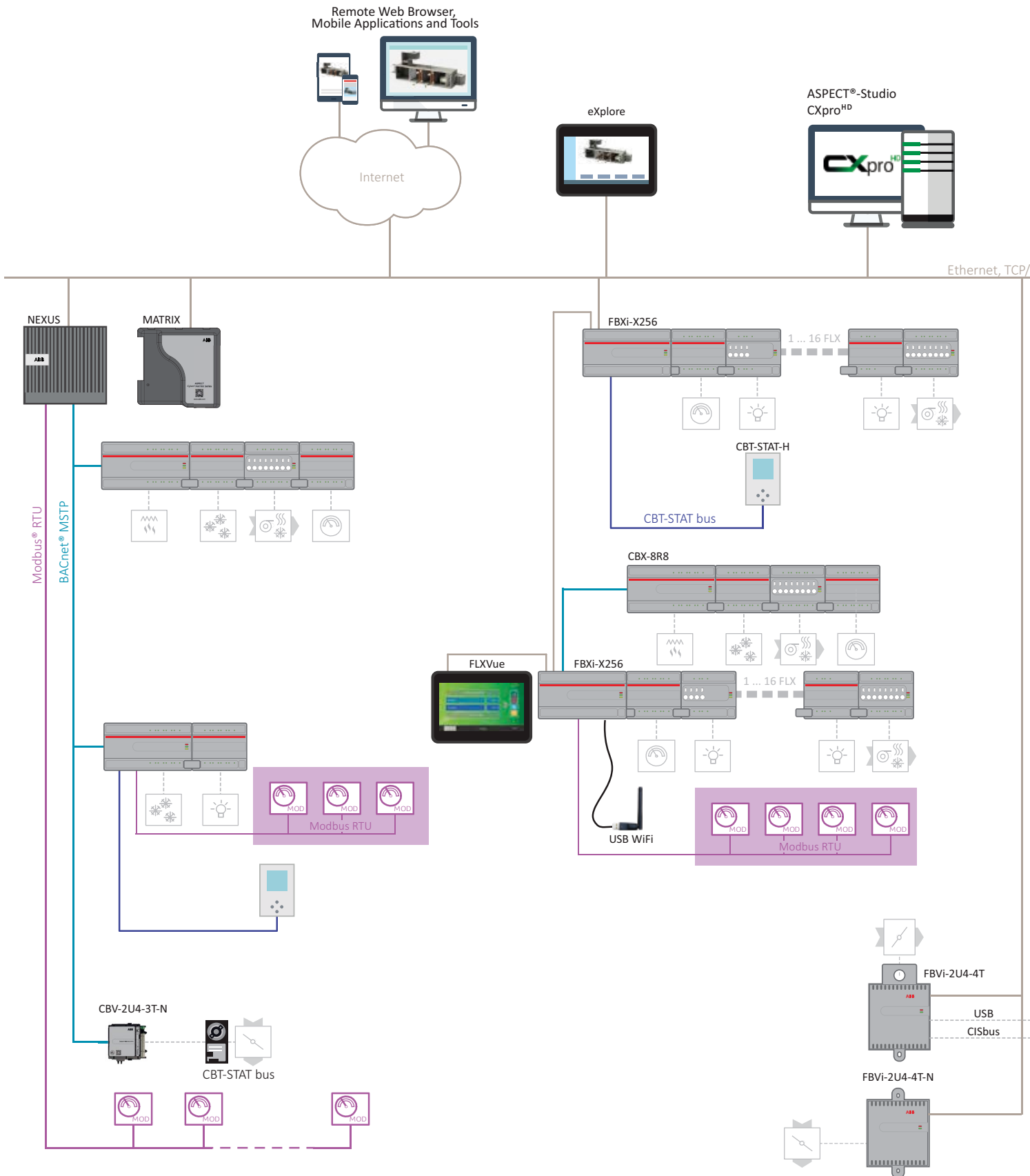
ABB Cylon® Smart Buildings

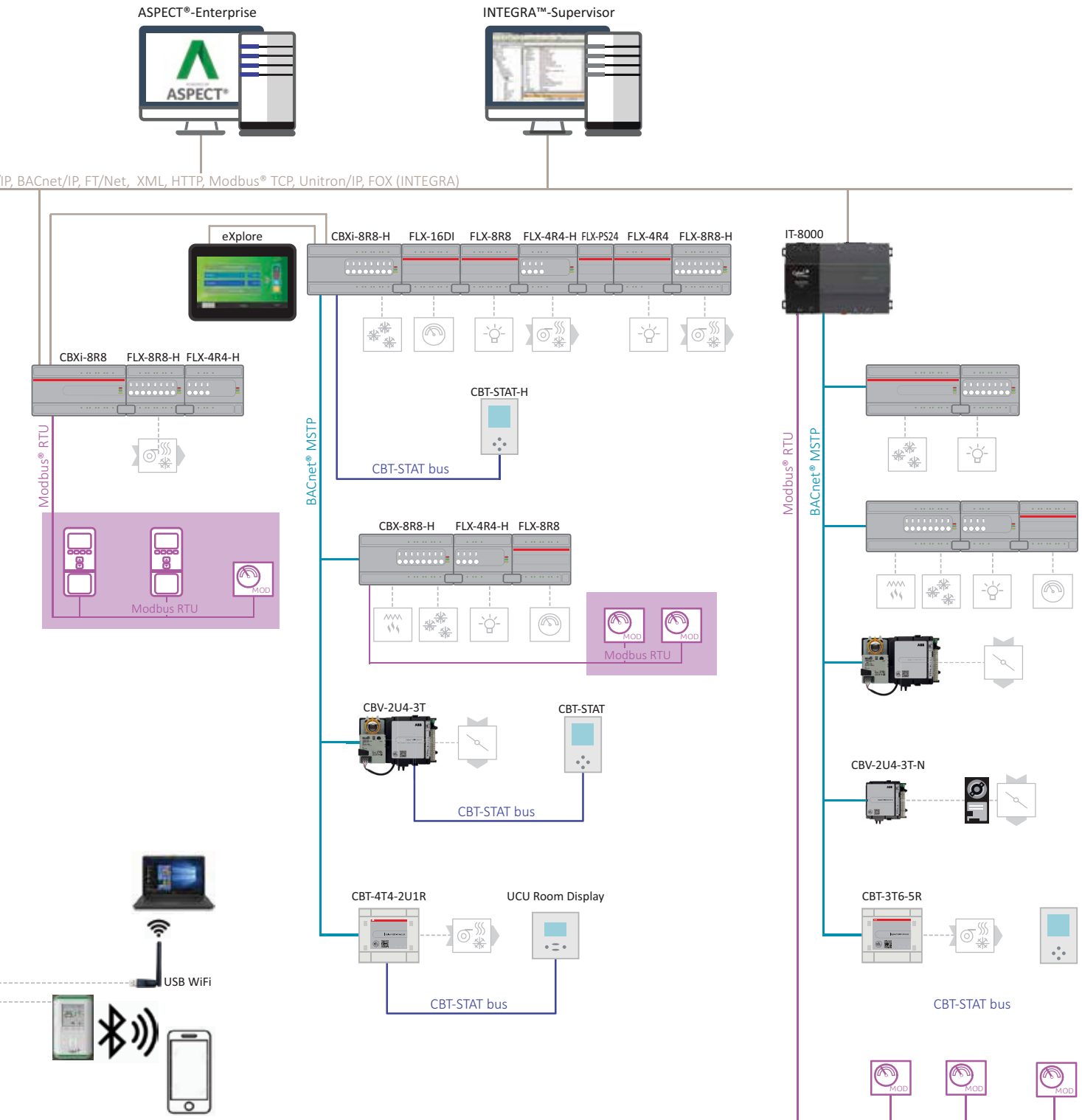
Catalogue 2021



- System
- ASPECT
- BACnet
- Accessories
- Solutions

System Architecture





Aspect Control Engines (ACE)



Matrix-216



Matrix-232

Description	Order details	
	Order code	Cylon reference
<p>Matrix-216</p> <p>Matrix ACE (ABB Cylon Aspect® Control Engine) with embedded Aspect® runtime engine and web UI, includes 2 RS-485 ports, configurable for 9.6 to 115.2 kbps, capable of supporting up to a total of 16 devices (either RS-485 or TCP/IP) or 750 points. Support for 2 RS-485 protocols (BACnet MS/TP, Modbus RTU, AAM PUP or Teletrol TSC), and a maximum of 64 devices per port (with additional licenses).</p> <p>One RJ-45 10/100 MB Ethernet port with TCP/IP support for FT/Net, BACnet/IP, Modbus TCP and ABB Cylon® Unitron. Field upgrade-able to support a maximum of 2,500 points and 128 devices as a combination of either TCP/IP or RS-485 connections.</p>	2CQG100102R1021	MATRIX-216
<p>Matrix-232</p> <p>Matrix ACE (ABB Cylon Aspect® Control Engine) with embedded Aspect® runtime engine and web UI, includes 2 RS-485 ports, configurable for 9.6 to 115.2 kbps, capable of supporting up to a total of 32 devices (either RS-485 or TCP/IP) or 1,250 points. Support for 2 RS-485 protocols (BACnet MS/TP, Modbus RTU, AAM PUP or Teletrol TSC), and a maximum of 64 devices per port (with additional licenses).</p> <p>One RJ-45 10/100 MB Ethernet port with TCP/IP support for FT/Net, BACnet/IP, Modbus TCP and ABB Cylon® Unitron. Field upgrade-able to support a maximum of 2,500 points and 128 devices as a combination of either TCP/IP or RS-485 connections.</p>	2CQG100103R1021	MATRIX-232

**Matrix-264****Matrix-296**

Description	Order details	
	Order code	Cylon reference
<p>Matrix-264</p> <p>Matrix ACE (ABB Cylon Aspect® Control Engine) with embedded Aspect® runtime engine and web UI, includes 2 RS-485 ports, configurable for 9.6 to 115.2 kbps, capable of supporting up to a total of 64 devices (either RS-485 or TCP/IP) or 1,750 points. Support for 2 RS-485 protocols (BACnet MS/TP, Modbus RTU, AAM PUP or Teletrol TSC), and a maximum of 64 devices per port (with additional licenses).</p> <p>One RJ-45 10/100 MB Ethernet port with TCP/IP support for FT/Net, BACnet/IP, Modbus TCP and ABB Cylon® Unitron. Field upgrade-able to support a maximum of 2,500 points and 128 devices as a combination of either TCP/IP or RS-485 connections.</p>	2CQG100104R1021	MATRIX-264
<p>Matrix-296</p> <p>Matrix ACE (ABB Cylon Aspect® Control Engine) with embedded Aspect® runtime engine and web UI, includes 2 RJ-485 ports, configurable for 9.6 to 115.2 kbps, capable of supporting up to a total of 96 devices (either RS-485 or TCP/IP) or 2,000 points. Support for 2 RS-485 protocols (BACnet MS/TP, Modbus RTU, AAM PUP or Teletrol TSC), and a maximum of 64 devices per port.</p> <p>One RJ-45 10/100 MB Ethernet port with TCP/IP support for FT/Net, BACnet/IP, Modbus TCP and ABB Cylon® Unitron. Field upgrade-able to support a maximum of 2,500 points and 128 devices as a combination of either TCP/IP or RS-485 connections.</p>	2CQG100105R1021	MATRIX-296

Aspect Control Engines (ACE)



Nexus-264



Nexus-2128

Description	Order details	
	Order code	Cylon reference
<p>Nexus-264</p> <p>Nexus ACE (ABB Cylon Aspect® Control Engine) with embedded Aspect® runtime engine and web UI, includes 2 RS-485 ports, configurable for 9.6 to 115.2 kbps, capable of supporting up to a total of 64 devices (either RS-485 or TCP/IP) or 4,000 points. Support for 2 RS-485 protocols (BACnet MS/TP, Modbus RTU, or AAM PUP).</p> <p>One RJ-45 10/100/1000 MB Ethernet port with TCP/IP support for FT/Net, BACnet/IP, Modbus TCP and Unitron. Field upgrade-able to support a maximum of 10,000 points and 128 devices as a combination of either TCP/IP or RS-485 connections.</p>	2CQG100103R2021	NEXUS-264
<p>Nexus-2128</p> <p>Nexus ACE (ABB Cylon Aspect® Control Engine) with embedded Aspect® runtime engine and web UI, includes 2 RS-485 ports, configurable for 9.6 to 115.2 kbps, capable of supporting up to a total of 128 devices (either RS-485 or TCP/IP) or 8,000 points. Support for 2 RS-485 protocols (BACnet MS/TP, Modbus RTU, or AAM PUP).</p> <p>One RJ-45 10/100/1000 MB Ethernet port with TCP/IP support for FT/Net, BACnet/IP, Modbus TCP and Unitron. Field upgrade-able to support a maximum of 10,000 points and 128 devices as a combination of either TCP/IP or RS-485 connections.</p>	2CQG100102R2021	NEXUS-2128

ABB Cylon Aspect® Supervisor & Engineering



**Aspect®-Studio
single user licence
(Soft Licence)**

**Aspect®-Studio
single user licence
(Hardware Dongle)**

**Aspect®-Studio
Add x 1 (Soft Licence)**

**Aspect®-Studio
Add x 1 (Hardware Dongle)**

**Aspect®-Studio
End-User licence**

Description	Order details	
	Order code	Cylon reference
Aspect®-Studio single user licence (Soft Licence) The Aspect®-Studio single user license is used to program Aspect® projects for a period of 12 months from date of issue. Contains 1 software dongle. Using this highly intuitive software environment, create and define all necessary elements for a project – including network device and point programming, global control sequencing, historical trending, alarming, scheduling, as well as rich graphical user interface pages. Features: <ul style="list-style-type: none"> • Complete library of elements including Logic, Math, Time, as well as specialized functions for database and protocol-specific capabilities. • Time-saving programming functions • Powerful simulation environment • Using defined information, Aspect®-Studio will autogenerate an HTML5 UI 	2CQG103403S3021	ASP-STU
Aspect®-Studio single user licence (Hardware Dongle) USB Dongle Key for Aspect®-Studio. Downloadable software (ships without CD) and Hardware License Key. Software application provides tools for integrators to quickly develop Aspect® GUI/HMI.	2CQG103405S3021	ASP-STU-D
Aspect®-Studio Add x 1 (Soft Licence) Downloadable software (ships without CD) and Software Licence. Licence and support for one additional user to work with Aspect®-Studio for 12 months from date of issue.	2CQG103404S3021	ASP-STU-A
Aspect®-Studio Add x 1 (Hardware Dongle) USB Dongle Key for ASPECT-Studio. Downloadable software (ships without CD) and Hardware License Key. Licence and support for one additional user to work with Aspect®-Studio for 12 months from date of issue.	2CQG103406S3021	ASP-STU-D-A
Aspect®-Studio End-User licence Downloadable software (ships without CD) and Software Licence. Non-expiring licence including maintenance updates within a single major version. Note: this licence is not upgradable to a new major version.	2CQG103401S3021	ASP-STU-EU

ABB Cylon Aspect® Supervisor & Engineering

	Description	Order details	
		Order code	Cylon reference
Aspect®-Studio End User Upgrade	Aspect®-Studio End User Upgrade Allows an Aspect-end-user licence to be upgraded to the next major version.	2CQG103402S3021	ASP-STU-EU-UPG
Aspect®-Studio licence annual renewal	Aspect®-Studio licence annual renewal Additional 12 month licence and support for one user for Aspect®-Studio.	2CQG103407S3021	ASP-STU-RENEW
Aspect®-Enterprise 2	Aspect®-Enterprise 2 Aspect-Enterprise software with support for 2 FT/Net connections (ABB Cylon Aspect® Control Engines) or 15,000 points. Runs on VMWare. Field upgradeable to support a maximum of 256 TCP/IP connections or 100,000 points.	2CQG103202S3021	ASPECT-ENT-2
Aspect®-Enterprise 12	Aspect®-Enterprise 12 Aspect-Enterprise software with support for 12 FT/Net connections (ABB Cylon Aspect® Control Engines) or 25,000 points. Runs on VMWare. Field upgradeable to support a maximum of 256 TCP/IP connections or 100,000 points.	2CQG103201S3021	ASPECT-ENT-12
Aspect®-Enterprise 96	Aspect®-Enterprise 96 Aspect-Enterprise software with support for 96 FT/Net connections (ABB Cylon Aspect® Control Engines) or 50,000 points. Runs on VMWare. Field upgradeable to support a maximum of 256 TCP/IP connections or 100,000 points.	2CQG103204S3021	ASPECT-ENT-96
Aspect®-Enterprise 256	Aspect®-Enterprise 256 Aspect-Enterprise software with support for 256 FT/Net connections (ABB Cylon Aspect® Control Engines) or 100,000 points. Runs on VMWare. Field upgradeable to support a maximum of 256 TCP/IP connections or 100,000 points.	2CQG103203S3021	ASPECT-ENT-256

ABB Cylon Aspect® Licence Upgrades

Description	Order details	
	Order code	Cylon reference
Matrix Series upgrade add 8 devices License file to upgrade Matrix Aspect® Control Engine (ACE). Adds support for an additional 8 devices or 250 points. Multiple MAX-LP-16 may be purchased to reach a maximum of 2,500 points and 128 devices as a combination of either TCP/IP or RS-485 connections.	2CQG100101R1021	MAT-LP-8
Matrix charge Series field licence upgrade charge This charge applies when there is no associated hardware or software purchased – i.e. field upgrades or moving a licence to a different device.	2CQG103703S3021	MAT-LIC-CHG
Nexus Series upgrade add 16 devices License file to upgrade Nexus-264 Aspect® Control Engine (ACE). Adds support for an additional 16 devices or 1,000 points. Multiple NEX-LP-16 may be purchased to reach a maximum of 10,000 points and 128 devices as a combination of either TCP/IP or RS-485 connections.	2CQG100101R2021	NEX-LP-16
Nexus Series field licence upgrade charge This charge applies when there is no associated hardware or software purchased – i.e. field upgrades or moving a licence to a different device.	2CQG103702S3021	NEX-LIC-CHG
Aspect®-Enterprise Control Engine Add Licence Pack Adds support for 1 FT/Net connection (Aspect® Control Engine) or 7,500 points to ASPECT-ENT-XXX.	2CQG103205S3021	ENT-ACE-1

ABB Cylon Aspect® Licence Upgrades

Description	Order details	
	Order code	Cylon reference
Aspect®-Enterprise 16 device TCP Add Licence Pack Adds support for 16 devices or 800 points of BACnet/IP or Modbus TCP to Aspect-ENT-XXX.	2CQG103207S3021	ENT-TCP-16
Aspect®-Enterprise 32 device TCP Add Licence Pack Adds support for 32 devices or 1,600 points of BACnet/IP or Modbus TCP to ASPECT-ENT-XXX.	2CQG103209S3021	ENT-TCP-32
Aspect®-Enterprise 64 device TCP Add Licence Pack Adds support for 64 devices or 3,200 points of BACnet/IP or Modbus TCP to ASPECT-ENT-XXX.	2CQG103210S3021	ENT-TCP-64
Aspect®-Enterprise 128 device TCP Add Licence Pack Adds support for 128 devices or 6,400 points of BACnet/IP or Modbus TCP to Aspect-ENT-XXX.	2CQG103206S3021	ENT-TCP-128
Aspect®-Enterprise 256 device TCP Add Licence Pack Adds support for 256 devices or 12,800 points of BACnet/IP or Modbus TCP to Aspect-ENT-XXX.	2CQG103208S3021	ENT-TCP-256
Aspect®-Enterprise field licence upgrade charge This charge applies when there is no associated hardware or software purchased – i.e. field upgrades or moving a licence to a different device.	2CQG103701S3021	ENT-LIC-CHG
Upgrade from ASPECT-ENT-12 to ASPECT-ENT-96 Aspect-Enterprise licence file to upgrade from ASPECT-ENT-12 (or lower) to ASPECT-ENT-96. Requires ENT-LIC-CHG.	2CQG103212S3021	ENT-UP-96
Upgrade from ASPECT-ENT-96 to ASPECT-ENT-256 Aspect-Enterprise licence file to upgrade from ASPECT-ENT-96 to ASPECT-ENT-256. Requires ENT-LIC-CHG.	2CQG103211S3021	ENT-UP-256

INTEGRA™ Control Engines



Description	Order details	
	Order code	Cylon reference
IT-8005-USWIFI-EMEA Initial 250pt USWiFi Bundled IT-8000 with America WLAN Country Code WiFi enabled. Includes core license for 250 points. Made up of IT-8000-WIFI + IT8-005-COR-E + IT8-005-SM0.	2CQG150114R4011	IT-8005-USWIFI-E
IT-8005-WWWIFI-EMEA Initial 250pt WWWiFi Bundled IT-8000 with Worldwide WLAN Code WiFi enabled. Includes core license for 250 points. Made up of IT-8000-WIFI + IT8-005-COR-E + IT8-005-SM0.	2CQG150115R4011	IT-8005-WWWIFI-E
IT-8005-NOWIFI-EMEA Initial 250pt NoWiFi Bundled IT-8000 with WiFi DISABLED. Includes core license for 250 points. Made up of IT-8000-NOWIFI + IT8-005-COR-E + IT8-005-SM0.	2CQG150126R4011	IT-8005-NOWIFI-E
IT8-010-DCP-EMEA Initial 500 pt IT-8000 initial device capacity pack license. Purchased at time of initial order with core software. Adds support for an additional 500 points to the core (IT8-XXX-COR).	2CQG150123S4061	IT8-010-DCP-E
IT8-010-DCU-EMEA Add 500 pt IT-8000 device capacity upgrade license. Purchased any time after initial core software purchase. Adds support for an additional 500 points to the core (IT8-XXX-COR-E).	2CQG150124S4061	IT8-010-DCU-E
IT-8010-USWIFI-EMEA Core 500 pt USWiFi Bundled IT-8000 with America WLAN Country Code WiFi enabled. Includes core license for 500 points. Made up of IT-8000-WIFI + IT8-010-COR-E + IT8-010-SM0.	2CQG150116R4011	IT-8010-USWIFI-E
IT-8010-WWWIFI-EMEA Core 500 pt WWWiFi Bundled IT-8000 with Worldwide WLAN Code WiFi enabled. Includes core license for 500 points. Made up of IT-8000-WIFI + IT8-010-COR-E + IT8-010-SM0.	2CQG150117R4011	IT-8010-WWWIFI-E
IT-8010-NOWIFI-EMEA Core 500 pt No WiFi Bundled IT-8000 with WiFi DISABLED. Includes core license for 500 points. Made up of IT-8000-NOWIFI + IT8-010-COR-E + IT8-010-SM0.	2CQG150127R4011	IT-8010-NOWIFI-E

INTEGRA™ Control Engines

Description	Order details	
	Order code	Cylon reference
IT8-025-DCP-EMEA Initial 1250pt IT-8000 initial device capacity pack license. Purchased at time of initial order with core software. Adds support for an additional 1,250 points to the core (IT8-XXX-COR-E).	2CQG150126S4061	IT8-025-DCP-E
IT8-025-DCU-EMEA Add 1250pt IT-8000 field capacity upgrade license. Purchased any time after initial core software purchase. Adds support for an additional 1,250 points to the core (IT8-XXX-COR-E).	2CQG150127S4061	IT8-025-DCU-E
IT-8025-USWIFI-EMEA Core 1250pt USWiFi Bundled IT-8000 with America WLAN Country Code WiFi enabled. Includes core license for 1250 points. Made up of IT-8000-WIFI + IT8-025-COR-E + IT8-025-SM0.	2CQG150118R4011	IT-8025-USWIFI-E
IT-8025-WWWIFI-EMEA Core 1250pt WWWiFi Bundled IT-8000 with Worldwide WLAN Code WiFi enabled. Includes core license for 1250 points. Made up of IT-8000-WIFI + IT8-025-COR-E + IT8-025-SM0.	2CQG150119R4011	IT-8025-WWWIFI-E
IT-8025-NOWIFI-EMEA Core 1250pt No WiFi Bundled IT-8000 with WiFi DISABLED. Includes core license for 1250 points. Made up of IT-8000-NOWIFI + IT8-025-COR-E + IT8-025-SM0.	2CQG150128R4011	IT-8025-NOWIFI-E
IT8-050-DCP-EMEA Initial 2500pt IT-8000 initial device capacity pack license. Purchased at time of initial order with core software. Adds support for an additional 2,500 points to the core (IT8-XXX-COR).	2CQG150128S4061	IT8-050-DCP-E
IT8-050-DCU-EMEA Add 2500pt IT-8000 field capacity upgrade license. Purchased any time after initial core software purchase. Adds support for an additional 2,500 points to the core (IT8-XXX-COR-E).	2CQG150129S4061	IT8-050-DCU-E
IT-8100-USWIFI-EMEA Core 5000pt USWiFi Bundled IT-8000 with America WLAN Country Code WiFi enabled. Includes core license for 5000 points. Made up of IT-8000-WIFI + IT8-100-COR-E + IT8-100-SM0.	2CQG150120R4011	IT-8100-USWIFI-E

INTEGRA™ Control Engines

Description	Order details	
	Order code	Cylon reference
IT-8100-WWWIFI-EMEA Core 5000pt WWiFi Bundled IT-8000 with Worldwide WLAN Code WiFi enabled. Includes core license for 5000 points. Made up of IT-8000-WIFI + IT8-100-COR-E + IT8-100-SM0.	2CQG150121R4011	IT-8100-WWWIFI-E
IT-8100-NOWIFI-EMEA Core 5000pt No Wi Fi Bundled IT-8000 with WiFi DISABLED. Includes core license for 5000 points. Made up of IT-8000-NOWIFI + IT8-100-COR-E + IT8-100-SM0.	2CQG150129R4011	IT-8100-NOWIFI-E
IT-8200-USWIFI-EMEA Core 10000pt USWi Fi Bundled IT-8000 with America WLAN Country Code WiFi enabled. Includes core license for 10000 points. Made up of IT-8000-WIFI + IT8-200-COR-E + IT8-200-SM0.	2CQG150122R4011	IT-8200-USWIFI-E
IT-8200-WWWIFI-EMEA Core 10000pt WWiFi Bundled IT-8000 with Worldwide WLAN Code WiFi enabled. Includes core license for 10000 points. Made up of IT-8000-WIFI + IT8-200-COR-E + IT8-200-SM0.	2CQG150123R4011	IT-8200-WWWIFI-E
IT-8200-NOWIFI-EMEA Core 10000pt No Wi Fi Bundled IT-8000 with WiFi DISABLED. Includes core license for 10000 points. Made up of IT-8000-NOWIFI + IT8-200-COR-E + IT8-200-SM0.	2CQG150130R4011	IT-8200-NOWIFI-E
IT8-DEMO-EMEA Demo 25000pt DEMO VERSION of INTEGRA IT-8000 controller includes 2 EIA-485 ports, configurable for 9.6 to 115.2 kbps. Support for 2 RS-485 protocols (BACnet MS/TP, LON, Modbus RTU, AAM PUP). Two RJ-45 10/100 MB Ethernet with TCP/IP support for FOX, BACnet/IP, and Modbus TCP. WiFi connectivity 802.11 a/b/g/n. Web Interface, embedded Workbench, integrated power supply and USB backup and restore. Includes core DEMO license file with support of up to 500 devices or 25,000 points and all standard drivers.	2CQG150124R4011	IT8-DEMO-E

INTEGRA™ Control Engine Accessories

Description	Order details	
	Order code	Cylon reference
IT8-NPB-LON LON Module IT-8000 add-on single port LON FTT10A module	2CQG155803P2061	IT8-NPB-LON
IT8-NPB-2X-485 Dual Port RS485 IT-8000 add-on dual port RS-485 module	2CQG155804P2061	IT8-NPB-2X-485
IT8-NPB-232 Single Port RS232 IT-8000 add-on single port RS-232 module	2CQG155805P2061	IT8-NPB-232
IT8-WPM Wall PSU IT-8000 wall plug module. 100-240 VAC, 50/60 Hz. Connect to the 2.5 mm barrel plug, 24 V input to the IT-8000 and includes, US, EU, UK and AU plugs	2CQG155806P2061	IT8-WPM
IT8-WIFI-EXT WLAN Antennna Extension IT-8000 extension cable and bracket for WLAN antenna	2CQG155808P2061	IT8-WIFI-EXT

INTEGRA™ Control Engine Drivers

Description	Order details	
	Order code	Cylon reference
IT8-DR-AC Driver Andover AC256 IT-8000 driver for Andover Controls AC256 over RS-232 or RS-485. (Beta version only)	2CQG150301S4061	IT8-DR-AC
IT8-DR-AINF Driver Andover Infinity IT-8000 driver for Andover Controls Infinity.	2CQG150302S4061	IT8-DR-AINF
IT8-DR-APHP Driver AAM PHP IT-8000 driver for American Auto-Matrix PHP over RS-232 or RS-485. Manufactured by 3rd party. Limited support.	2CQG150303S4061	IT8-DR-APHP
IT8-DR-APUP Driver AAM PUP IT-8000 driver for American Auto-Matrix PUP over RS-232 or RS-485. Manufactured by 3rd party. Limited support.	2CQG150304S4061	IT8-DR-APUP
IT8-DR-CCN Driver CarrierComfortNetwork IT-8000 driver for Carrier Comfort Network.	2CQG150305S4061	IT8-DR-CCN
IT8-DR-FLEX Driver Flex IT-8000 driver for Flex over RS-232 or RS-485.	2CQG150306S4061	IT8-DR-FLEX
IT8-DR-JSON Driver JSON IT-8000 JSON Toolkit. Requires IT-8000 and valid Software Maintenance agreement.	2CQG150311S4061	IT8-DR-JSON
IT8-DR-MCQUAY Driver McQuay to OPM IT-8000 driver for McQuay to OPM driver.	2CQG150312S4061	IT8-DR-MCQUAY

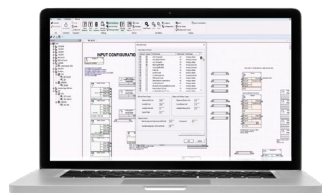
INTEGRA™ Control Engine Drivers

Description	Order details	
	Order code	Cylon reference
IT8-DR-MFID Driver Micros Fidelio IP IT-8000 driver for Micros Fidelio IP driver.	2CQG150313S4061	IT8-DR-MFID
IT8-DR-SMSALM Driver SMS Alarms IT-8000 SMS Alarm driver. Enables SMS alarms to be sent to any mobile phone via a GSM/GPRS modem connected to the RS-232 serial port driver. Supported in AX version 3.8U1 only. Not Available for N4.	2CQG150317S4061	IT8-DR-SMSALM
IT8-FIPS FIPS 140-2 Level 1 Provides FIPS 140-2 Level 1 conformance using the integrated FIPS certified BouncyCastle module for IT-8000. Requires IT-8000 version 4.6 and later.	2CQG150315S4061	IT8-FIPS

INTEGRA™ Enterprise Drivers

Description	Order details	
	Order code	Cylon reference
ITS-DEMO DEMO Supervisor DEMO VERSION of INTEGRA-Supervisor software for Windows OS. Includes all available drivers. License will renew annually with the receipt of annual support fee. NOTE: Demo Licenses for partner engineering and demo use only. Not for end user sales.	2CQG150501S4061	ITS-DEMO
ITS-DR-CSV Supervisor driver CSV INTEGRA-Supervisor CSV database driver. Requires ITS-XXX-SUP	2CQG150502S4061	ITS-DR-CSV
ITS-DR-MYSQL Supervisor driver MySQL INTEGRA-Supervisor MYSQL database driver. Requires ITS-XXX-SUP	2CQG150503S4061	ITS-DR-MYSQL
ITS-DR-ORCL Supervisor driver Oracle 11G INTEGRA-Supervisor Oracle 11G database driver. Requires ITS-XXX-SUP	2CQG150505S4061	ITS-DR-ORCL
ITS-DR-JSON Supervisor driver JSON INTEGRA-Supervisor JSON Toolkit for Supervisor (SMA Required)	2CQG150507S4061	ITS-DR-JSON

INTEGRA™ Enterprise Software



Description	Order details	
	Order code	Cylon reference
IT-LIC-CHG License change fee License change fee to change an existing license at the request of the customer. Applies to all license changes for either IT-8000 or INTEGRA-Supervisor software, except when a driver, upgrade or other software is purchased.	2CQG153701S4061	IT-LIC-CHG
ITS-000-SUP Core 0 connections INTEGRA-Supervisor software core with support for 0 Niagara network connections. Includes standard drivers. Requires ITS-000-SM0. Typically used to manage TCP/IP field devices (requires ITS-XXX-DIP)	2CQG153202S4061	ITS-000-SUP
ITS-001-ADD Add 1 connections Adds one additional Niagara connection to INTEGRA-Supervisor core ITS-000-SUP to ITS-100-SUP	2CQG153203S4061	ITS-001-ADD
ITS-001-SUP Core 1 connections INTEGRA-Supervisor software core with support for 1 Niagara network connection. Includes standard drivers. Requires ITS-001-SM0.	2CQG153204S4061	ITS-001-SUP
ITS-010-DIP-EMEA Add 500pts INTEGRA-Supervisor Device Integration Pack license. Adds support for 500 points to INTEGRA-Supervisor core software (ITS-XXX-SUP). Standard drivers included. Requires ITS-XXX-SUP.	2CQG153232S4061	ITS-010-DIP-E
ITS-010-SUP Core 10 connections INTEGRA-Supervisor software core with support for 10 Niagara network connections. Includes standard drivers. Requires ITS-010-SM0.	2CQG153209S4061	ITS-010-SUP
ITS-025-DIP-EMEA Add 1250pt INTEGRA-Supervisor Device Integration Pack license. Adds support for 1,250 points to INTEGRA-Supervisor core software (ITS-XXX-SUP). Standard drivers included. Requires ITS-XXX-SUP.	2CQG153233S4061	ITS-025-DIP-E

INTEGRA™ Enterprise Software

Description	Order details	
	Order code	Cylon reference
ITS-050-DIP-EMEA Add 2500pt INTEGRA-Supervisor Device Integration Pack license. Adds support for 2,500 points to INTEGRA-Supervisor core software (ITS-XXX-SUP). Standard drivers included. Requires ITS-XXX-SUP.	2CQG153234S4061	ITS-050-DIP-E
ITS-1000-DIP-EMEA Add 50000pt INTEGRA-Supervisor Device Integration Pack license. Adds support for 50,000 points to INTEGRA-Supervisor core software (ITS-XXX-SUP). Standard drivers included. Requires ITS-XXX-SUP.	2CQG153235S4061	ITS-1000-DIP-E
ITS-100-DIP-EMEA Add 5000pt INTEGRA-Supervisor Device Integration Pack license. Adds support for 100 non-Niagara devices or 5,000 points to INTEGRA-Supervisor core software (ITS-XXX-SUP). Standard drivers included. Requires ITS-XXX-SUP.	2CQG153236S4061	ITS-100-DIP-E
ITS-100-SUP Core 100 connections INTEGRA-Supervisor software core with support for 100 Niagara network connections. Includes standard drivers. Requires ITS-100-SM0.	2CQG153214S4061	ITS-100-SUP
ITS-100-UPG Upgrade to 100 connections INTEGRA-Supervisor upgrade to ITS-100-SUP from ITS-000-SUP to ITS-010-SUP. Will maintain any ITS-001-ADD that were added to original core (ITS-XXX-N4)	2CQG153215S4061	ITS-100-UPG
ITS-200-DIP-EMEA Add 10000pt INTEGRA-Supervisor Device Integration Pack license. Adds support for 10,000 points to INTEGRA-Supervisor core software (ITS-XXX-SUP). Standard drivers included. Requires ITS-XXX-SUP.	2CQG153237S4061	ITS-200-DIP-E
ITS-500-DIP-EMEA Add 25000pt INTEGRA-Supervisor Device Integration Pack license. Adds support for 25,000 points to INTEGRA-Supervisor core software (ITS-XXX-SUP). Standard drivers included. Requires ITS-XXX-SUP.	2CQG153238S4061	ITS-500-DIP-E

INTEGRA™ Enterprise Software

Description	Order details	
	Order code	Cylon reference
ITS-ALM-CNSL Alarm Console client INTEGRA-Supervisor Alarm Console client. Support for Niagara alarm monitoring.	2CQG153218S4061	ITS-ALM-CNSL
ITS-UNL-SUP Core unlimited connections INTEGRA-Supervisor software core with support for unlimited Niagara network connections. Includes standard drivers. Requires ITS-UNL-SM0.	2CQG153221S4061	ITS-UNL-SUP
ITS-UNL-UPG Upgrade 100 to unlimited INTEGRA-Supervisor upgrade from ITS-100-SUP to ITS-UNL-SUP	2CQG153222S4061	ITS-UNL-UPG

INTEGRA™ IT-8000 Software Maintenance Agreements

Description	Order details	
	Order code	Cylon reference
IT8-005-SM0 18 month maintenance IT-8000 software maintenance agreement. 18 month software maintenance agreement. Must be purchased in conjunction with initial core software IT8-005-COR. Optional 3 or 5 year maintenance may be substituted.	2CQG153601S4061	IT8-005-SM0
IT8-005-SM1 1 year maintenance IT-8000 software maintenance agreement. 1 year software maintenance agreement for core software IT8-005-COR.	2CQG153602S4061	IT8-005-SM1
IT8-005-SM3 3 year maintenance IT-8000 software maintenance agreement. 3 year software maintenance agreement for core software IT8-005-COR.	2CQG153603S4061	IT8-005-SM3
IT8-005-SM5 5 year maintenance IT-8000 software maintenance agreement. 5 year software maintenance agreement for core software IT8-005-COR.	2CQG153604S4061	IT8-005-SM5
IT8-010-SM0 18 month maintenance IT-8000 software maintenance agreement. 18 month software maintenance agreement. Must be purchased in conjunction with initial core software IT8-010-COR. Optional 3 or 5 year maintenance may be substituted.	2CQG153605S4061	IT8-010-SM0
IT8-010-SM1 1 year maintenance IT-8000 software maintenance agreement. 1 year software maintenance agreement for core software IT8-010-COR.	2CQG153606S4061	IT8-010-SM1
IT8-010-SM3 3 year maintenance IT-8000 software maintenance agreement. 3 year software maintenance agreement for core software IT8-010-COR.	2CQG153607S4061	IT8-010-SM3

INTEGRA™ IT-8000 Software Maintenance Agreements

Description	Order details	
	Order code	Cylon reference
IT8-010-SM5 5 year maintenance IT-8000 software maintenance agreement. 5 year software maintenance agreement for core software IT8-010-COR.	2CQG153608S4061	IT8-010-SM5
IT8-025-SM0 18 month maintenance IT-8000 software maintenance agreement. 18 month software maintenance agreement. Must be purchased in conjunction with initial core software IT8-025-COR. Optional 3 or 5 year maintenance may be substituted.	2CQG153609S4061	IT8-025-SM0
IT8-025-SM1 1 year maintenance IT-8000 software maintenance agreement. 1 year software maintenance agreement for core software IT8-025-COR.	2CQG153610S4061	IT8-025-SM1
IT8-025-SM3 3 year maintenance IT-8000 software maintenance agreement. 3 year software maintenance agreement for core software IT8-025-COR.	2CQG153611S4061	IT8-025-SM3
IT8-025-SM5 5 year maintenance IT-8000 software maintenance agreement. 5 year software maintenance agreement for core software IT8-025-COR.	2CQG153612S4061	IT8-025-SM5
IT8-100-SM0 18 month maintenance IT-8000 software maintenance agreement. 18 month software maintenance agreement. Must be purchased in conjunction with initial core software IT8-100-COR. Optional 3 or 5 year maintenance may be substituted.	2CQG153613S4061	IT8-100-SM0

INTEGRA™ IT-8000 Software Maintenance Agreements

Description	Order details	
	Order code	Cylon reference
IT8-100-SM1 1 year maintenance IT-8000 software maintenance agreement. 1 year software maintenance agreement for core software IT8-100-COR.	2CQG153614S4061	IT8-100-SM1
IT8-100-SM3 3 year maintenance IT-8000 software maintenance agreement. 3 year software maintenance agreement for core software IT8-100-COR.	2CQG153615S4061	IT8-100-SM3
IT8-100-SM5 5 year maintenance IT-8000 software maintenance agreement. 5 year software maintenance agreement for core software IT8-100-COR.	2CQG153616S4061	IT8-100-SM5
IT8-200-SM0 18 month maintenance IT-8000 software maintenance agreement. 18 month software maintenance agreement. Must be purchased in conjunction with initial core software IT8-200-COR. Optional 3 or 5 year maintenance may be substituted.	2CQG153617S4061	IT8-200-SM0
IT8-200-SM1 1 year maintenance IT-8000 software maintenance agreement. 1 year software maintenance agreement for core software IT8-200-COR.	2CQG153618S4061	IT8-200-SM1
IT8-200-SM3 3 year maintenance IT-8000 software maintenance agreement. 3 year software maintenance agreement for core software IT8-200-COR.	2CQG153619S4061	IT8-200-SM3
IT8-200-SM5 5 year maintenance IT-8000 software maintenance agreement. 5 year software maintenance agreement for core software IT8-200-COR.	2CQG153620S4061	IT8-200-SM5

INTEGRA™ Enterprise Software Maintenance Agreements

Description	Order details	
	Order code	Cylon reference
ITS-000-SM0 18 month maintenance INTEGRA-Supervisor software maintenance agreement. 18 month software maintenance agreement. Must be purchased in conjunction with initial core software ITS-000-SUP. Optional 3 or 5 year maintenance may be substituted.	2CQG153621S4061	ITS-000-SM0
ITS-000-SM1 1 year maintenance INTEGRA-Supervisor software maintenance agreement. 1 year software maintenance agreement for core software ITS-000-SUP.	2CQG153622S4061	ITS-000-SM1
ITS-000-SM3 3 year maintenance INTEGRA-Supervisor software maintenance agreement. 3 year software maintenance agreement for core software ITS-000-SUP.	2CQG153623S4061	ITS-000-SM3
ITS-000-SM5 5 year maintenance INTEGRA-Supervisor software maintenance agreement. 5 year software maintenance agreement for core software ITS-000-SUP.	2CQG153624S4061	ITS-000-SM5
ITS-001-SM0 18 month maintenance INTEGRA-Supervisor software maintenance agreement. 18 month software maintenance agreement. Must be purchased in conjunction with initial core software ITS-001-SUP. Optional 3 or 5 year maintenance may be substituted.	2CQG153625S4061	ITS-001-SM0
ITS-001-SM1 1 year maintenance INTEGRA-Supervisor software maintenance agreement. 1 year software maintenance agreement for core software ITS-001-SUP.	2CQG153626S4061	ITS-001-SM1
ITS-001-SM3 3 year maintenance INTEGRA-Supervisor software maintenance agreement. 3 year software maintenance agreement for core software ITS-001-SUP.	2CQG153627S4061	ITS-001-SM3

INTEGRA™ Enterprise Software Maintenance Agreements

Description	Order details	
	Order code	Cylon reference
ITS-001-SM5 5 year maintenance INTEGRA-Supervisor software maintenance agreement. 5 year software maintenance agreement for core software ITS-001-SUP.	2CQG153628S4061	ITS-001-SM5
ITS-010-SM0 18 month maintenance INTEGRA-Supervisor software maintenance agreement. 18 month software maintenance agreement. Must be purchased in conjunction with initial core software ITS-010-SUP. Optional 3 or 5 year maintenance may be substituted.	2CQG153637S4061	ITS-010-SM0
ITS-010-SM1 1 year maintenance INTEGRA-Supervisor software maintenance agreement. 1 year software maintenance agreement for core software ITS-010-SUP.	2CQG153638S4061	ITS-010-SM1
ITS-010-SM3 3 year maintenance INTEGRA-Supervisor software maintenance agreement. 3 year software maintenance agreement for core software ITS-010-SUP.	2CQG153639S4061	ITS-010-SM3
ITS-010-SM5 5 year maintenance INTEGRA-Supervisor software maintenance agreement. 5 year software maintenance agreement for core software ITS-010-SUP.	2CQG153640S4061	ITS-010-SM5
ITS-100-SM0 18 month maintenance INTEGRA-Supervisor software maintenance agreement. 18 month software maintenance agreement. Must be purchased in conjunction with initial core software ITS-100-SUP. Optional 3 or 5 year maintenance may be substituted.	2CQG153641S4061	ITS-100-SM0
ITS-100-SM1 1 year maintenance INTEGRA-Supervisor software maintenance agreement. 1 year software maintenance agreement for core software ITS-100-SUP.	2CQG153642S4061	ITS-100-SM1

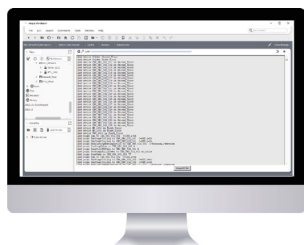
INTEGRA™ Enterprise Software Maintenance Agreements

Description	Order details	
	Order code	Cylon reference
ITS-100-SM3 3 year maintenance INTEGRA-Supervisor software maintenance agreement. 3 year software maintenance agreement for core software ITS-100-SUP.	2CQG153643S4061	ITS-100-SM3
ITS-100-SM5 5 year maintenance INTEGRA-Supervisor software maintenance agreement. 5 year software maintenance agreement for core software ITS-100-SUP.	2CQG153644S4061	ITS-100-SM5
ITS-UNL-SM0 18 month maintenance INTEGRA-Supervisor software maintenance agreement. 18 month software maintenance agreement. Must be purchased in conjunction with initial core software ITS-UNL-SUP. Optional 3 or 5 year maintenance may be substituted.	2CQG153645S4061	ITS-UNL-SM0
ITS-UNL-SM1 1 year maintenance INTEGRA-Supervisor software maintenance agreement. 1 year software maintenance agreement for core software ITS-UNL-SUP.	2CQG153646S4061	ITS-UNL-SM1
ITS-UNL-SM3 3 year maintenance INTEGRA-Supervisor software maintenance agreement. 3 year software maintenance agreement for core software ITS-UNL-SUP.	2CQG153647S4061	ITS-UNL-SM3
ITS-UNL-SM5 5 year maintenance INTEGRA-Supervisor software maintenance agreement. 5 year software maintenance agreement for core software ITS-UNL-SUP.	2CQG153648S4061	ITS-UNL-SM5

INTEGRA™ Renewal Fees

Description	Order details	
	Order code	Cylon reference
IT8-DEMO-SUP-REN-EMEA Demo Support renew Annual support fee and renewal of Demo equipment and Workbench licences. The fee for this part includes the annual fee for the Self-Licensing Extension Service and Marketplace Prime package. All rights to the Marketplace package are conditioned on agreement to the Niagara Marketplace Terms and Conditions of Use.	2CQG150125R4011	IT8-DEMO-SUP-R-E
INTEGRA-RENEW-2 Monthly Renewal Monthly Support fee and renewal of Demo equipment and Workbench licenses for new SI partner. Per month in first year before renewal.	2CQG153902S4061	INTEGRA-RENEW-2

INTEGRA™ Integration Tools



Description	Order details	
	Order code	Cylon reference
INTEGRA-PROPACK-5 ProPack 5 device INTEGRA-ProPack License File. Supports up to 5 devices on non-Cylon IT-8000 or INTEGRA-Supervisor software. INTEGRA-ProPack is included at no cost on IT-8000 or INTEGRA-Supervisor software.	2CQG153401S4061	INT-PPACK-5
INTEGRA-PROPACK-10 ProPack 10 device INTEGRA-ProPack License File. Supports up to 10 devices on non-Cylon IT-8000 or INTEGRA-Supervisor software. INTEGRA-ProPack is included at no cost on IT-8000 or INTEGRA-Supervisor software.	2CQG153402S4061	INT-PPACK-10
INTEGRA-PROPACK-25 ProPack 25 device INTEGRA-ProPack License File. Supports up to 25 devices on non-Cylon IT-8000 or INTEGRA-Supervisor software. INTEGRA-ProPack is included at no cost on IT-8000 or INTEGRA-Supervisor software.	2CQG153403S4061	INT-PPACK-25
INTEGRA-PROPACK-50 ProPack 50 device INTEGRA-ProPack License File. Supports up to 50 devices on non-Cylon IT-8000 or INTEGRA-Supervisor software. INTEGRA-ProPack is included at no cost on IT-8000 or INTEGRA-Supervisor software.	2CQG153404S4061	INT-PPACK-50

Description	Order details	
	Order code	Cylon reference
INTEGRA-PROPACK-100 ProPack 100 device INTEGRA-ProPack License File. Supports up to 100 devices on non-Cylon IT-8000 or INTEGRA-Supervisor software. INTEGRA-ProPack is included at no cost on IT-8000 or INTEGRA-Supervisor software.	2CQG153405S4061	INT-PPACK-100
INTEGRA-PROPACK-200 ProPack 200 device INTEGRA-ProPack License File. Supports up to 50 devices on non-Cylon IT-8000 or INTEGRA-Supervisor software. INTEGRA-ProPack is included at no cost on IT-8000 or INTEGRA-Supervisor software.	2CQG153406S4061	INT-PPACK-200

BACnet Main Plant Controllers



CBXi-8R8



CBXi-8R8-H



CBX-8R8

Description	Order code	
	Order code	Cylon reference
<p>CBXi-8R8</p> <p>16-Point to 64-Point (using FLX modules) fully programmable IP-based BTL-listed (pending) BACnet® Building Controller (B-BC). For control and monitoring of HVAC equipment, supports simultaneous multi-protocol communications including BACnet® IP, BACnet® MS/TP, Modbus® TCP and Modbus® RTU.</p> <p>Controller features 8 UniPuts™ with Relay outputs (software configurable for AI, AO, DI or DO-R (Relay)) and 8 UI. Includes support for a maximum of 120 points across a maximum of 12 devices that can be a combination of Modbus® RTU or TCP.</p>	2CQG201001R1021	1M102100
<p>CBXi-8R8-H</p> <p>16-Point to 64-Point (using FLX modules) fully programmable IP-based BTL-listed (pending) BACnet® Building Controller (B-BC) with HOA override switches and potentiometers for UniPuts™. For control and monitoring of HVAC equipment, supports simultaneous multi-protocol communications including BACnet® IP, BACnet® MS/TP, Modbus® TCP and Modbus® RTU.</p> <p>Controller features 8 UniPuts™ with Relay outputs (software configurable for AI, AO, DI or DO-R (Relay)) and 8 UI. Includes support for a maximum of 120 points across a maximum of 12 devices that can be a combination of Modbus® RTU or TCP.</p>	2CQG201002R1021	1M102102
<p>CBX-8R8</p> <p>16-Point BACnet® B-AAC programmable controller, for control and monitoring of HVAC equipment.</p> <p>Controller features 8 UniPuts™ with Relay outputs (software configurable for AI, AO, DI or DO-R (Relay)) and 8 UI. Includes support for 4 Modbus® RTU devices or 40 points.</p>	2CQG201003R1021	1M100100

**CBX-8R8-H****FLX-8R8****FLX-8R8-H****FLX-4R4**

Description	Order code	
	Order code	Cylon reference
CBX-8R8-H 16-Point BACnet® B-AAC programmable controller with HOA override switches and potentiometers for UniPuts™. For control and monitoring of HVAC equipment. Controller features 8 UniPuts™ with Relay outputs (software configurable for AI, AO, DI or DO-R (Relay)) and 8 UI. Includes support for 4 Modbus® RTU devices or 40 points.	2CQG201004R1021	1M100102
FLX-8R8 Field Level eXpansion series extension module providing 16 points of control – 8 Universal Inputs and 8 UniPuts with Relay.	2CQG200706R1021	1M101100
FLX-8R8-H Field Level eXpansion series extension module providing 16 points of control – 8 Universal Inputs and 8 UniPuts with Relay. Includes local over-ride (HOA) on 8 UniPut with Relay terminals.	2CQG200707R1021	1M101102
FLX-4R4 8-Point Field Level eXpansion (FLX) I/O module for CBX. Module features 4 UniPuts™ with Relay outputs and 4 UI. A maximum of three FLX modules may be added to a single CBX.	2CQG200704R1021	1M101106

BACnet Main Plant Controllers



FLX-4R4-H



FLX-16DI



FLX-PS24

Description	Order code	
	Order code	Cylon reference
FLX-4R4-H 8-Point Field Level eXpansion (FLX) I/O module for CBX with HOA override switches and potentiometers on UniPuts™. Module features 4 UniPuts™ with Relay outputs and 4 UI. A maximum of three FLX modules may be added to a single CBX.	2CQG200705R1021	1M101108
FLX-16DI 16-Point Field Level eXpansion (FLX) I/O module for CBX. Module features 16 Digital Inputs. A maximum of three FLX modules may be added to a single CBX.	2CQG200703R1021	1M101110
FLX-RMC Remote Module Connectors are used to extend the FLX bus a total maximum of 100 ft. (30 m) from the main controller (CBX-8R8) to facilitate remote mounting of FLX I/O modules. 2 x FLX-bus screw-terminal units and 1 x FLX-bus standard connector are included.	2CQG205801R1021	1S9NT104
FLX-PS24 20 V DC Power supply module for FLX Field Level eXpansion IO modules and external field devices (using the FLX-RMC)	2CQG205601R1021	1M101111

BACnet Unitary Controllers



CBT12iVAV

Description	Order code	
	Order code	Cylon reference
CBT12iVAV BACnet programmable VAV controller with integrated airflow sensor and actuator. <ul style="list-style-type: none"> • 4 Universal Inputs • 2 Analog Outputs • 3 Triac Outputs • 500 strategy blocks • 4 Trendlogs with up to • 1024 entries per log • 240 configurable • BACnet objects • Up to 99 controllers • per fieldbus. 	2CQG201514R0021	1M710110
CBV-2U4-3T-SI BACnet B-AAC single-duct VAV terminal unit controller with integrated actuator. <p>Controller features 2 UniPuts™ (software configured for AI, AO, DI or DO), 4 UI and 3 DO (Triac). Built-in differential pressure transducer (0...320 Pa) and actuator (5Nm). Freely programmable, c/w pre-loaded factory configuration strategy with SI units (°C).</p>	2CQG201513R0021	1M710115
CBV-2U4-3T-N-SI BACnet B-AAC single-duct VAV terminal unit controller without actuator. <p>Controller features 2 UniPuts™ (software configured for AI, AO, DI or DO), 4 UI and 3 DO (Triac). Built-in differential pressure transducer (0...320 Pa). Freely programmable, c/w pre-loaded factory configuration strategy with SI units (°C).</p>	2CQG201512R0021	1M710117



CBV-2U4-3T-SI



CBV-2U4-3T-N-SI

BACnet Unitary Controllers



CBT-3T6-5R



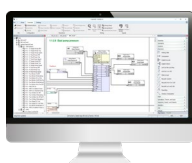
CBT-4T4-2U1R

Description	Order code	
	Order code	Cylon reference
<p>CBT-3T6-5R 14-Point BACnet B-AAC programmable controller for terminal applications such as heat pump, roof top unit, fan coil, chilled ceiling, and small air handling units.</p> <p>Controller features 3 UniPuts™ with Triac outputs (software configured for AI, AO, DI or DO-T (Triac), 6 UI and 5 Digital (Relay) Outputs. Freely programmable, no pre-loaded strategy.</p>	2CQG201309R1021	1M810120
<p>CBT-4T4-2U1R 11 point BACnet B-AAC programmable controller for terminal applications such as fan coil units with EC motors, heat pumps, unit ventilators and chilled ceilings.</p> <p>Controller features 4 UniPuts™ with Triac outputs (software configured for AI, AO, DI or DO-T (Triac), 4 UI, 2 Uniputs and 1 x 8A mains rated Digital (high in-rush current relay) Output. Freely programmable, no pre-loaded strategy.</p>	2CQG201308R1021	1M610105

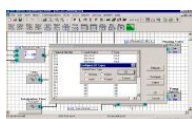
BACnet Supervisor & Engineering



**CEC BACnet - Licence
(Software)**



CXproHD-D-A



**CEC BACnet - Additional
(Software)**



CXproHD-CD



CXproHD-D

Description	Order code	
	Order code	Cylon reference
CEC BACnet – Licence (Software) Programming software licence for ABB Cylon® BACnet System. For use by system integrators only.	2CQG203406S3021	1M4SW490
CXproHD-D-A Additional Dongle Key. Requires CXPROHD-D. Downloadable software (software CD available as separate order if required). Software application provides all tools for integrators to quickly develop operational strategies for the ABB Cylon® CB Line of BACnet® controllers and allows sites to be designed, configured, tested, engineered, commissioned and maintained. For use by system integrators only.	2CQG203405S3021	1M4UC145
CEC BACnet – Additional (Software) Additional licence for use of the ABB Cylon® Engineering Centre programming software including BACnet features. For use by registered ABB Cylon® system integrators only. Not for resale. Not licensed for permanent site installations. Requires initial and annual registration.	2CQG203407S3021	1M4SW520
CXproHD-CD CD containing CXproHD software (requires CXPROHD-D for dongle key) application provides all tools for integrators to quickly develop operational strategies for the ABB Cylon® CB Line of BACnet® controllers and allows sites to be designed, configured, tested, engineered, commissioned and maintained.	2CQG203401S3021	1M4UC146
CXproHD-D USB Dongle Key for CXproHD. Downloadable software (software CD available as separate order if required). Software application provides all tools for integrators to quickly develop operational strategies for the ABB Cylon® CB Line of BACnet® controllers and allows sites to be designed, configured, tested, engineered, commissioned and maintained. For use by system integrators only.	2CQG203404S3021	1M4UC135

Unitron Main Plant Controllers



UC32.24

Description	Order code	
	Order code	Cylon reference
UC32.24 Programmable controller <ul style="list-style-type: none"> • 8 Uniputs™ • 8 Uniputs™ + Relays • 8 Universal Inputs • Up to 16 controllers per fieldbus • Flash upgradable firmware • Time-stamped datalogs • 1024 strategy blocks • 32 datalogs with up to 1024 entries per datalog • Max address = 16 	2CQG251011R1021	1M160400
UC32.24K Programmable controller with internal display & keypad <ul style="list-style-type: none"> • 8 Uniputs™ • 8 Uniputs™ + Relays • 8 Universal Inputs • Up to 16 controllers per fieldbus • Flash upgradable firmware • Time-stamped datalogs • 1024 strategy blocks • 32 datalogs with up to 1024 entries per datalog • Max address = 16 	2CQG251015R1021	1M160900
UC32.16 Programmable controller <ul style="list-style-type: none"> • 8 Uniputs™ + Relays • 8 Universal Inputs • Up to 16 controllers per fieldbus • Flash upgradable firmware • Time-stamped datalogs • 1024 strategy blocks • 32 datalogs with up to 1024 entries per datalog • Max address = 16 	2CQG251007R1021	1M160300



UC32.24K



UC32.16

**PG32.16 (UC32.PG)****UC32.12**

Description	Order code	
	Order code	Cylon reference
PG32.16 (UC.32.PG) Programmable controller as replacement for UC.XX controller <ul style="list-style-type: none"> • 8 Uniputs™ + Relays • 8 Universal Inputs • Up to 16 controllers per fieldbus • Flash upgradable firmware • Time-stamped datalogs • 255 strategy blocks • 16 datalogs with up to 1024 entries per datalog • Max address = 63 	2CQG251009R1021	1M160325
UC32.12 Programmable controller <ul style="list-style-type: none"> • 4 Uniputs™ + Relays • 8 Universal Inputs • Up to 32 controllers per fieldbus • Flash upgradable firmware • Time-stamped datalogs • 1024 strategy block • 32 datalogs with up to 1024 entries per datalog • Max address = 32 	2CQG251004R1021	1M160200

Unitron Main Plant Controllers



UC32.8



UC32.16DI

Description	Order code	
	Order code	Cylon reference
UC32.8 Programmable controller <ul style="list-style-type: none">• 4 Uniputs™ + Relays• 4 Universal Inputs• Up to 32 controllers per fieldbus• Flash upgradable firmware• Time-stamped datalogs• 1024 strategy blocks• 32 datalogs with up to 1024 entries per datalog• Max address = 32	2CQG251001R1021	1M160100
UC32.16DI Digital Input multiplexer. <ul style="list-style-type: none">• 16 digital inputs• Screw terminals• Max address = 31	2CQG251018R1021	1M560010

Unitron Unitary Controllers



UCU10FC/K



UCU Room Keypad

Description	Order code	
	Order code	Cylon reference
UCU10FC/K Programmable unitary controller with interface for UCU Room Display. <ul style="list-style-type: none"> • 3 Universal Inputs 190 strategy blocks • 2 Universal Outputs 4 datalogs with up to 102 entries per datalog • 2 Triac Outputs Data security • 3 Relay Digital Outputs Max address = 63 • Up to 63 controllers per fieldbus 	2CQG251303R1021	1M320135
UCU Room Keypad A dedicated room control display for fan coil control. The programmable display allows the user to view and adjust selected parameters within the controller to which it is connected. <p>Note: Only compatible with the UCU10FC/K, UCU10VAV/K and CBX-8R8 controllers.</p>	2CQG256501R1021	1S9KS650

Unitron Unitary Controllers



UCU8



UCU12

Description	Order code	
	Order code	Cylon reference
UCU8 Programmable unitary controller <ul style="list-style-type: none"> • 3 Universal Inputs • 5 Triac Outputs • Up to 63 controllers per fieldbus • 190 strategy blocks • 4 datalogs with up to 102 entries per datalog • Data security • Max address = 63 	2CQG251305R1021	1M330100
UCU12 Programmable unitary controller <ul style="list-style-type: none"> • 3 universal inputs • 2 active inputs • 1 fixed digital input • 4 Fixed Triac Outputs • 2 Analog or Triac Outputs • depending on a jumper setting • Up to 63 controllers per fieldbus • 255 strategy blocks • 4 datalogs with up to 102 entries per datalog • Data security • Max address = 63 	2CQG251301R1021	1M310350

Unitron Communications Controllers



UC32.netK



UC32.netK/WEB/MOD

Description	Order code	
	Order code	Cylon reference
UC32.netK Ethernet based peer-to-peer communications controller with internal display and keypad <ul style="list-style-type: none"> • RS232 Service Port • RS232 External Keypad port • RS232 Modem/printer port • RS485 Fieldbus • Embedded web server for configuration • Max Field Controllers: 63 • Modbus option not included. 	2CQG250901R1021	1M260100
UC32.netK/WEB/MOD Ethernet based peer-to-peer communications controller with internal display and keypad. <ul style="list-style-type: none"> • RS232 Service Port • RS232 External Keypad port • RS232 Modem/printer port • RS485 Fieldbus • Embedded WebLink • web server included • Max Field Controllers: 63 • Modbus communication RS232/RS485 included. • Max Modbus devices: 48 	2CQG250903R1021	1M260130

Unitron Relays



UC32RP8



UC32R/L4

Description	Order code	
	Order code	Cylon reference
UC32RP8 External relay pack with 8 relays, screw terminals.	2CQG205301R1021	1M9RS050
UC32R/L4 External relay pack with 4 raise/lower relays, screw terminals.	2CQG205303R1021	1M9RS070

Displays & Accessories



eXplore-c10



eXplore-c7



UCKRA420

Description	Order code	
	Order code	Cylon reference
eXplore-c10 eXplore-c10 is a 10.1" touchscreen for use with either Aspect® HTML interfaces, or ABB Cylon's® easy to program, easy to use menu-based SiteGuide user interface for basic supervision of a ABB Cylon® BMS site. Includes plug-top power supply.	2CQG202002R2021	1S9KS700
eXplore-c7 eXplore-c7 is a 7" touchscreen for use with either Aspect® HTML interfaces, or ABB Cylon's® easy to program, easy to use menu-based SiteGuide user interface for basic supervision of a ABB Cylon® BMS site. Includes plug-top power supply.	2CQG202003R2021	1S9KS707
UCKRA420 Panel mounted, surface mounted or handheld remote serial display and keypad with 2m cable for connection to compatible controllers (UC32.netK, UC32.xx, UCxxPG-R, UCC4/3P/K). Limited compatibility with BACnet controllers. Does not support BACnet objects.	2CQG2010XXR1021	1M9KS100

Unitron Integration



KNX Gateway



M-BUS Gateway-Pack



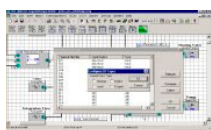
Fidelio Gateway

Description	Order code	
	Order code	Cylon reference
KNX Gateway ABB Cylon® Cylon KNX Gateway makes UnitronUC32 points and resources accessible from a KNX (EIB) system and vice-versa. Standard version can read/write 500 analog and 500 digital points.	2CQG255901R1021	1S9NT500
M-BUS Gateway-Pack The ABB Cylon® M-Bus Gateway Pack provides an interface between UnitronUC32 BEMS networks and M-Bus meters, allowing Unitron to read and write M-Bus data. This pack contains both the M-Bus Gateway and the M-Bus physical converter and supports up to 60 meters (600 M-Bus signals).	2CQG255902R1021	1S9NT610
Fidelio Gateway The ABB Cylon® Fidelio Gateway provides an interface between Unitron BEMS networks and Micros Fidelio system, allowing UnitronUC32 to read room check-in status. The gateway supports up to 2,000 datapoints (rooms). Note: Must be ordered with additional TSG services.	2CQG255903R1021	1S9NT700

Unitron Software



CEC - Licence



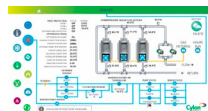
CEC - Additional



CEC - Annual Renewal

Description	Order code	
	Order code	Cylon reference
CEC - Licence This Licence allows the use of the ABB Cylon® Engineering Center programming software; Includes 1 USB dongle. For use by registered ABB Cylon® system integrators only. Not for resale. Not licensed for permanent site installations. Requires initial and annual registration. Note: this licence allows engineering of Unitron devices only. To engineer both Unitron and BACnet sites, 1M4UC135 or 1M4SW490 should be purchased instead.	2CQG253417S3021	1M4UC130
CEC - Licence (Software) This Licence allows the use of the ABB Cylon® Engineering Centre programming software	2CQG253413S3021	1M4SW530
CEC - Additional Additional USB dongle for use of the ABB Cylon® Engineering Center programming software. Only available once 1M4UC130 has been purchased. For use by registered ABB Cylon® system integrators only. Not for resale. Not licensed for permanent site installations. Requires initial and annual registration.	2CQG253418S3021	1M4UC140
CEC - Additional (Software) Additional licence for use of the ABB Cylon® Engineering Centre programming software. Only available once 1M4UC130 has been purchased.	2CQG253412S3021	1M4SW500
CEC - Annual Renewal Annual renewal of the ABB Cylon® Engineering Centre software licence. Available to system integrators only. Subject to Annual Renewal of ABB Cylon® Engineer Certification.	2CQG253919S3021	1M4UC150

Unitron Software



UCC - Licence

UCC Licence Soft Dongle

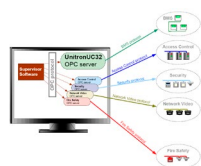
UCC - Additional

**UCC Additional User
Soft Dongle**

Description	Order code	
	Order code	Cylon reference
UCC - Licence Unitron Command Centre Site Licence allows the use of Unitron Command Centre Supervisory Software. Includes 1 USB Dongle. Recommended for sites where 5 or more Unitron Command Centre dongles are required.	2CQG253414S3021	1M4UC100
UCC Licence Soft Dongle Unitron Command Centre Site Licence allows the use of Unitron Command Centre Supervisory Software. Includes 1 Soft Dongle. Recommended for sites where 5 or more Unitron Command Centre dongles are required. Note: There is a cost associated with transferring this licence. Please contact abb.com/buildings before transferring the licence.	2CQG253409S3021	1M4SW460
UCC - Additional Additional USB dongle for use of Unitron Command Centre Supervisory Software. Only available for purchase and use on sites with a valid Unitron Command Centre Site Licence 1M4UC100.	2CQG253416S3021	1M4UC120
UCC Additional Software-Dongle Additional Soft dongle for use of Unitron Command Centre Supervisory Software. Only available for purchase and use on sites with a valid Unitron Command Centre Site Licence 1M4SW460. Note: There is a cost associated with transferring this licence. Please contact abb.com/buildings before transferring the licence.	2CQG253411S3021	1M4SW480

UCC - Single User

Description	Order code	
	Order code	Cylon reference
UCC - Single User Unitron Command Centre Single User allows the use of Unitron Command Centre Supervisory Software. Includes 1 USB Dongle.	2CQG253415S3021	1M4UC110
UCC Single User Soft Dongle Unitron Command Centre Single User allows the use of Unitron Command Centre Supervisory Software. Includes 1 Dongle. Note: There is a cost associated with transferring this licence. Please contact abb.com/buildings before transferring the licence.	2CQG253410S3021	1M4SW470
OPC Server The OPC Server provides an interface between OPC DA 2.05 compliant SCADA packages and the UC32 and UCU range of field controllers. Includes single server licence.	2CQG255905S3021	1M4SW250

**OPC Server**

Unitron Cables

Description	Order code	
	Order code	Cylon reference
UC16 to PC Cable UCU Molex female to 9 Pin D-Type female PC serial communication cable, 2m. Used for PC to UCU commissioning.	2CQG255701R1021	1S9CS020
UC32 - PC Connection Cable UC32 to PC cable assembly for permanent installation.	2CQG255702R1021	1S9CS080
UC32 - PC Commissioning Cable UC32 RJ-45 connector male (plug) to 9 pin D-type female PC commissioning cable.	2CQG255703R1021	1S9CS090
UC32 - Unitron Modem Cable UC32 RJ-11 male to 25 pin D-type male Modem cable assembly.	2CQG255705R1021	1S9CS160
UCC4.net/UCU Service Port/PalmOS Cable UCC4.net 9 pin D-type male, UCU service port Molex female to 9 pin D-type male plug serial communication adapter, 15 cm. Requires hand held device with suitable 9 pin D-type socket serial cable (not supplied).	2CQG255704R1021	1S9CS130

Sensors – Wired



Room Temperature Sensor (WRF04)



Room Temperature Sensor (WRF04P)



Room Temperature Sensor with Pot. & Button (WRF04PT)

Description	Order code	
	Order code	Cylon reference
Room Temperature Sensor (WRF04) <ul style="list-style-type: none"> Measuring insert: 1x NTC 10kOhm Temperature range: -35...+70°C Housing: ABS pure white (RAL9010), IP20 L 84.5 x B 84.5 x H 25 mm 	2CQG505113R2021	1S9SW140
Room Temperature Sensor (WRF04P) <ul style="list-style-type: none"> Surface Mounting Measuring insert: 1x NTC 10kOhm Temperature range: -35...+70°C Housing: ABS, pure white (RAL9010), IP20 L 84.5 x B 84.5 x H 25 mm 	2CQG505114R2021	1S9SW142
Room Temperature Sensor with Pot. & Button (WRF04PT) <ul style="list-style-type: none"> Measuring insert: 1x NTC 10kOhm Temperature range: -35...+70°C Housing: ABS, pure white (RAL9010), IP20 L 84.5 x B 84.5 x H 25 mm 	2CQG505115R2021	1S9SW146

Sensors – Wired



Duct Temperature Sensor (AKF1046507)

Description	Order code	
	Order code	Cylon reference
Duct Temperature Sensor (AKF1046507) <ul style="list-style-type: none"> Measuring insert SI-Protection: 1 x NTC10k Changeable Temperature range: -50...+150°C Mat. 1.4571 Connection head: Polyamide white, IP65 Probe: SH EL = 465 x 7 mm 	2CQG505105R2021	1S9SW106
Mounting Flange (MF7) <ul style="list-style-type: none"> Material PA6.6 glass ball reinforced D = 55 mm, Colour black. For sensor pocket D = 7 mm 	2CQG505804R2021	1S9SW126
Outdoor Temperature Sensor (AGS54) <ul style="list-style-type: none"> Output: 1 x NTC10k Temperature range: -50...+90°C Housing: Polyamide white, IP65 L 65 x B 50 x H 37.5 mm 	2CQG505101R2021	1S9SW100
Contact Temperature Sensor (VFG54) <ul style="list-style-type: none"> Output: 1 x NTC10k Temperature range: -35...+120°C Housing: Polyamide white IP65 L 65 x B 50 x H 37.5 mm <p>Clamp not supplied.</p>	2CQG505112R2021	1S9SW138



Outdoor Temperature Sensor (AGS54)



Contact Temperature Sensor (VFG54)



192 mm Duct Temperature Sensor (AKF1019207)

Description	Order code	
	Order code	Cylon reference
192 mm Duct Temperature Sensor (AKF1019207) <ul style="list-style-type: none"> Measuring insert SI-Protection: 1 x NTC10k Temperature range: -50...+150°C Mat. 1.4571 Connection head: Polyamide white IP65 Probe: SH EL = 192 x 7 mm 	2CQG505104R2021	1S9SW104
62 mm Immersion Temperature Sensor (AKF106207) <ul style="list-style-type: none"> Measuring insert SI-Protection: 1 x NTC10k Temperature range: -50...+150°C Mat. 1.4571 Connection head: Polyamide white IP65 Probe: SH EL = 62 x 7 mm 	2CQG505106R2021	1S9SW108
Immersion Pocket Stainless Steel (THVA 50 x 10 x 1 mm) <ul style="list-style-type: none"> EL = 50 x 10 x 1 mm Mat. 1.4571 SW24 G½" ISO 228T1 PN40 <p>Use with AKF106207 (1S9SW108)</p>	2CQG505111R2021	1S9SW138
Immersion Pocket Brass (THMS 50 x 10 x 1 mm) <ul style="list-style-type: none"> EL = 50 x 10 x 1 mm Mat. Brass nickel-plated SW22, G½" PN16 <p>Clamp not supplied.</p>	2CQG505805R2021	1S9SW132



62 mm Immersion Temperature Sensor (AKF106207)



Immersion Pocket Stainless Steel (THVA 50 x 10 x 1 mm)



Immersion Pocket Brass (THMS 50 x 10 x 1 mm)

Sensors – Wired



**135 mm Immersion
Temperature Sensor
135mm (AKF1013507)**



**Immersion Pocket Brass
(THMS 120x10x1mm)**



**Room Humidity/
Temperature Sensor
(FTW04VS)**

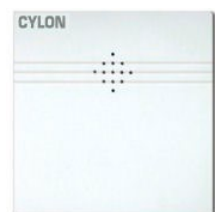
Description	Order code	
	Order code	Cylon reference
135 mm Immersion Temperature Sensor 135mm (AKF1013507) <ul style="list-style-type: none"> Measuring insert SI-Protection: 1 x NTC10k Changeable Temperature range: -50...+150°C Mat. 1.4571 Probe: SH EL = 135 x 7mm Connection head: Polyamide white, IP65 	2CQG505103R2021	1S9SW102
Immersion Pocket Brass (THMS 120 x 10 x 1 mm) <ul style="list-style-type: none"> EL = 120 x 10 x 1 mm Nickel-plated SW22 R½" PN 16 <p>Use with AKF1013507 (1S9SW102)</p>	2CQG505806R2021	1S9SW148
Room Humidity / Temperature Sensor (FTW04VS) <ul style="list-style-type: none"> Humidity-transmitter 0%...100%rF = 0-10 V Adjustment: 55 %rF Tolerance: ± 2% (35%...75%rF) UV: 15-24V DC/15-24 V AC Temp.Sensor: 1 x NTC 10 kOhm Housing: ABS, pure white (RAL9010), IP20 L 84.5 x B 84.5 x H 25 mm 	2CQG505107R2021	1S9SW114



**Room Humidity/
Temperature Sensor
(LC-FTW04VS)**



**Duct Humidity/
Temperature Sensor
(LC-FTK140VV)**



**Room Air-Quality Sensor
(LW04)**

Description	Order code	
	Order code	Cylon reference
Room Humidity/Temperature Sensor (LC-FTW04VS) <ul style="list-style-type: none"> Humidity-transmitter, 0%...100%rF = 0-10 V Adjustment: 55%rF Tolerance: $\pm 3\%$ (15%...85%rF) Uv: 15-24 V DC/24 V AC ($\pm 20\%$); 50/60Hz Housing: ABS pure white (RAL9010), IP20 L 84.5 x B 84.5 x H 25 mm Temp.Sensor: 1 x NTC 10k 	2CQG505109R2021	1S9SW118
Duct Humidity/Temperature Sensor (LC-FTK140VV) <ul style="list-style-type: none"> Humidity-transmitter 0%...100%rF = 0-10 V Tolerance: $\pm 3\%$ (15%...85%rF) Temp.Sensor: 1x NTC 10kOhm Sensor tube: 140 x 19 mm Mat. ABS Uv: 15-24 V DC/24 V AC ($\pm 20\%$); 50/60Hz Connection head: Polyamide white, IP65 	2CQG505108R2021	1S9SW116
Room Air-Quality Sensor (LW04) <ul style="list-style-type: none"> Output: 0-10 V Uv = 15-24V DC/15-24 V AC Housing: ABS, pure white (RAL9010), IP20 L 84.5 x B 84.5 x H 25 mm 	2CQG505110R2021	1S9SW122

Sensors - Wireless



EPM 100

Enocean Wireless /
Batteryless Room
Temperature Sensor (SR04)Enocean Wireless Room
Temperature/Humidity
Sensor (SR04RH)Enocean Wireless /
Batteryless Outdoor
Temperature Sensor (SR65)

Description	Order code	
	Order code	Cylon reference
EPM 100 Mobile Tool for Measuring enocean Field Strength at 868.3MHz.	2CQG505205R2021	1S9SL300
Enocean Wireless / Batteryless Room Temperature Sensor (SR04) <ul style="list-style-type: none"> Power Supply: Solar energy Maintenance free Measuring Range: 0...40°C Accuracy (5...35°C): ±0,4K Housing: ABS (ASA), IP20 Colour white similar RAL 9010. 	2CQG505201R2021	1S9SL302
Enocean Wireless Room Temperature/ Humidity Sensor (SR04RH) <ul style="list-style-type: none"> Power Supply: Solar energy Maintenance free Measuring Range: Humidity 0...100 % Temperature 0...40°C Accuracy: Humidity 1 Point Calibration 50 %: ±3 % Range (30 %...70 %): ±4 % Accuracy: Temperature (5...35°C): ±0,4K Housing: ABS (ASA), IP20 Colour white similar RAL 9010 	2CQG505202R2021	1S9SL304
Enocean Wireless / Batteryless Outdoor Temperature Sensor (SR65) <ul style="list-style-type: none"> Power supply: Solar energy storage Maintenance-free Measuring Range: -20...60°C Accuracy (-15...55 °C): ±0.8 K Housing: PA6, IP65 Colour white 	2CQG505203R2021	1S9SL306



Enocean Wireless Contact Temperature Sensor With Battery (SR65VFGBAT)

Description	Order code	
	Order code	Cylon reference
Enocean Wireless Contact Temperature Sensor With Battery (SR65VFGBAT) <ul style="list-style-type: none"> Power supply: Battery 3 V Type CR1620 Measuring Range: 10...90°C Colour: white Accuracy (15...85°C): ±0.8 K Housing: PA6, IP65 Clamp not supplied.	2CQG505204R2021	1S9SL316
Enocean Wireless Receiver (SRCRS485MODBUS) <ul style="list-style-type: none"> RS485 MODBUS Protocol Power supply: 15-24 V DC or 24 V AC ±10% Interface: RS485 – MODBUS Antenna: Internal Housing: ABS, IP20 Colour white similar RAL9010 	2CQG505807R2021	1S9SL318
Enocean Wireless Repeater (SRE-Repeater) <ul style="list-style-type: none"> Power supply: 230 V AC 50/60Hz Antenna: Internal Housing: PA6, IP65 Colour Pure white 	2CQG505808R2021	1S9SL320



Enocean Wireless Receiver (SRCRS485MODBUS)



Enocean Wireless Repeater (SRE-Repeater)

Demonstration & Technical Services

Description	Order code	
	Order code	Cylon reference
Chargeable Site Support The net daily rate for a ABB Cylon® Engineer on-site support (excluding travel, accommodation & subsistence expenses which are charged additionally at cost).	2CQG204007X5021	9M9TR140
Training Course - Off Site ABB Cylon® provides off-site training on request for specific customers. This is the net daily rate for the course for up to 2 attendees (excluding travel, accommodation & subsistence expenses which are charged additionally at cost).	2CQG204005X5021	9M9TR120
Training Course - Off Site Additional Attendee For off-site training additional attendees are charged at this net daily rate per person.	2CQG204006X5021	9M9TR130
Training Course Cancellation Fee For open courses attendees may cancel up to 2 weeks in advance. If cancellation is made less than 2 weeks in advance of the course the following net daily cancellation rate per person applies.	2CQG204004X5021	9M9TR110
CBX/FLX Demo Suitcase Aspect® Demonstration Suitcase containing: MATRIX, CBX, FLX and SiteGuide v2.2. Includes UK/Ireland Mains connection.	2CQG205802R5021	1M9ZA810



CBX/FLX Demo Suitcase

Other



EIBAS-100T/R

Description	Order code	
	Order code	Cylon reference
EIBAS-100T/R Ethernet switch - Din rail mounted 5 ports. Auto port polarity detection. PSU 24V AC.	2CQG605801R2021	1S9ET340

Withdrawn Product/Spares



CBR



CBR/MOD

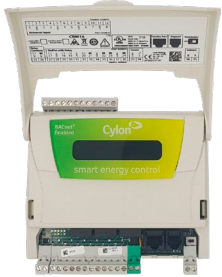
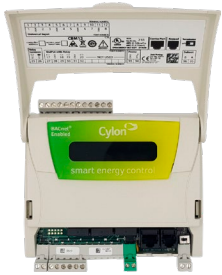
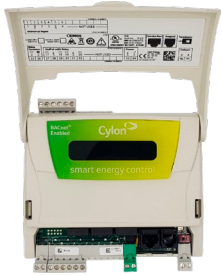


CBR/MODex



CBM24

Description	Order code	
	Order code	Cylon reference
CBR ABB Cylon® BACnet Router that connects any BACnet MS/TP network to a BACnet/IP network.	2CQG200901R1021	1M280100
CBR/MOD ABB Cylon® BACnet Router that connects any BACnet MS/TP network to a BACnet/IP network with Modbus gateway functionality supporting up to 48 devices.	2CQG200903R1021	1M280105
CBR/MODex ABB Cylon® BACnet Router that connects any MS/TP network to a BACnet/IP network with extended Modbus gateway functionality supporting up to 122 devices.	2CQG200905R1021	1M280110
CBM24 BACnet programmable controller. <ul style="list-style-type: none"> • 8 UniPuts™ • 8 UniPuts™ mit Relays • 8 Universal Inputs • 224 configurable BACnet objects • 1024 strategy blocks • Up to 16 controllers per Fieldbus • Flash upgradable firmware 	2CQG201011R1021	1M160440

**CBM16****CBM12****CBM08**

Description	Order code	
	Order code	Cylon reference
CBM16 BACnet programmable controller. <ul style="list-style-type: none"> • 8 Uniputs™ + Relays • 8 Universal Inputs • 224 configurable BACnet objects • 1024 strategy blocks • Up to 16 controllers per Fieldbus • Flash upgradable firmware 	2CQG201010R1021	1M160340
CBM12 BACnet programmable controller. <ul style="list-style-type: none"> • 4 UniPuts™ + Relays • 8 Universal Inputs • 224 configurable BACnet objects • 1024 strategy blocks • Up to 32 controllers per Fieldbus • Flash upgradable firmware 	2CQG201009R1021	1M160225
CBM08 BACnet programmable controller. <ul style="list-style-type: none"> • 4 UniPuts™ + Relays • 4 Universal Inputs • 224 configurable BACnet objects • 1024 strategy blocks • Up to 32 controllers per Fieldbus • Flash upgradable firmware 	2CQG201008R1021	1M160105

Withdrawn Product/Spares



UC32.netK/P

Description	Order code	
	Order code	Cylon reference
UC32.netK/P Restricted regional availability. Ethernet based "Peer-to-Peer" - station for communication with integrated display and keypad: <ul style="list-style-type: none"> • RS232 service port • RS232 external keypad port • RS232 modem/printer port • RS485 field bus port • Web server for configuration • Max. number of field stations: 63 • Modbus port • RS232/RS485 for max. 32 participants • BACnet/IP interface 	2CQG200907R1021	1M260150
Dongle Exchange Change of Dongle for the same software product e.g. Parallel to USB, large Parallel to small Parallel or faulty dongle (outside of warranty) replacement. The following steps apply. Step 1 – Customer obtains RMA number. Step 2 – Customer orders replacement dongle (RMA and order form received by ABB Cylon®). Step 3 – The replacement dongle is shipped and invoiced at normal price. Step 4 – Customer returns the original dongle within 60 days and a credit is given for the amount invoiced (in step 3) minus the dongle exchange fee. Note: Only applies where there is a USB Dongle available for the same software product. Maximum limit of 5 years on any dongles to be exchanged.	2CQG603703S5021	CEC-D-EX



ABB Cylon® SMS Gateway



CBT-4T4-4T

Description	Order code	
	Order code	Cylon reference
ABB Cylon® SMS Gateway ABB Cylon® SMS Gateway is an optional feature that enables delivery of alarms using SMS text messaging. The software and SMS modem connect directly to the Supervisor PC. This enables delivery of alarms using SMS text messaging without the need for internet connections, email access or SMS service centres. To get up and running, all you need is a SIM card from your preferred GSM provider, the ABB Cylon® SMS Gateway software and the GSM SMS modem connected to the PC. Setting up the recipients is done using the Unitron Command Centre. Note: This product is not supplied by ABB Cylon®. ABB Cylon® will provide details of the supplier on request.	2CQG255904R1021	UNI-SMS-GW
CBT-4T4-4T 12-Point BACnet B-AAC programmable controller for terminal applications such as heat pump, roof top unit, fan coil, chilled ceiling, and small air handling units. Controller features 4 UniPuts™ with Triac outputs (software configured for AI, AO, DI or DO-T (Triac), 4 UI and 4 Digital (Triac) Outputs. Freely programmable.	2CQG201311R1021	1M610130
Room Temperature Sensor (WRF04FC) Room temperature sensor with potentiometer and rotary switch. <ul style="list-style-type: none"> • Surface mounting • Measuring insert: 1x NTC 10kOhm • Housing: ABS, pure white (RAL9010), IP20 • L 84.5 x B 84.5 x H 25 mm • Temperature range: -35...+70°C • Operating elements: Potentiometer 1 kOhm (-,0,+); Rotary Switch (Auto, 0,I,II,III) • Standard legend 	2CQG505116R2021	1S9SW144

Withdrawn Product/Spares



PSTN Modem

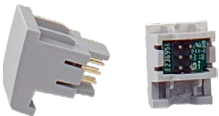


GSM-Modem

Description	Order code	
	Order code	Cylon reference
PSTN Modem ABB Cylon® PSTN Modem for connection to Unitron Controllers. <ul style="list-style-type: none"> • V92/56K bps data rate • RS-232 serial interface with baud rates from 2400 to 19200 • powered from 24 V AC • Din Rail Mountable, in ABB Cylon® UCU housing <p>Connection cable to Unitron PG-R Controller included. Select appropriate controller interface cable from list below when ordering.</p> <p>(a) UC32.net (c) UCC4 (b) UC32 Field Controller (d) Unitron PG-R</p>	2CQG200909R2021	1M250200
GSM-Modem ABB Cylon® Dual Band GSM-Modem (900/1800MHz) for remote connection to UnitronUC32 Controllers. <ul style="list-style-type: none"> • RS232 Baud rates from 2400 to 9600 • Din Rail mountable • powered from 24 V AC • in ABB Cylon® UCU housing <p>GSM Antenna and controller interface cable included. Select appropriate controller interface cable when ordering:</p> <p>(a) UC32.net (b) UC32 Field Controller</p> <p>Note: SIM card must be data-enabled for GSM.</p>	2CQG200910R2021	1M250300



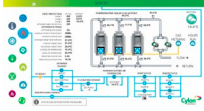
FLX-Bus



FLX-Bus

Description	Order code	
	Order code	Cylon reference
FLX-bus Interconnect FLX-bus interconnect component, purchased separately	2CQG206001R1021	1S9NT101
FLX-bus Terminator FLX-bus terminator component, purchased separately	2CQG206002R1021	1S9NT102

Withdrawn Product/Spares



Description	Order code	
	Order code	Cylon reference
Server Weblink - 1 User Web server based supervisor software for Unitron systems. Licence for 1 web user at a time.	2CQG253001S3021	1M4SW200
Server Weblink - 2 Users Web server based supervisor software for Unitron systems. Licence for 2 simultaneous web users.	2CQG253002S3021	1M4SW210
Server Weblink - 3 Users Web server based supervisor software for Unitron systems. Licence for 3 simultaneous web users.	2CQG253003S3021	1M4SW220
Server Weblink - Unlimited Web server based supervisor software for Unitron systems. Licence for 4 and above simultaneous web users.	2CQG253004S3021	1M4SW230
Server Weblink 1 User Soft Dongle Web server based supervisor software for Unitron systems. Licence for 1 web user at a time. Note: There is a cost associated with transferring this licence. Please contact abb.com/buildings before transferring the licence.	2CQG253005S3021	1M4SW400
Server Weblink 2 Users Soft Dongle Web server based supervisor software for Unitron systems. Licence for 2 simultaneous web users. Note: There is a cost associated with transferring this licence. Please contact abb.com/buildings before transferring the licence.	2CQG253006S3021	1M4SW410
Server Weblink 3 Users Soft Dongle Web server based supervisor software for Unitron systems. Licence for 3 simultaneous web users. Note: There is a cost associated with transferring this licence. Please contact abb.com/buildings before transferring the licence.	2CQG253007S3021	1M4SW420
Server Weblink - Unlimited Soft Dongle Web server based supervisor software for Unitron systems. Licence for 4 and above simultaneous web users. Note: There is a cost associated with transferring this licence. Please contact abb.com/buildings before transferring the licence.	2CQG253008S3021	1M4SW430

Notes

This image shows a full page of a document template designed for handwritten notes or essays. It features approximately 30 evenly spaced, thin horizontal grey lines across the entire page. The margins are consistent on all sides, providing a clear area for writing. There are no titles, headers, or other markings present on the page.

Notes

This image shows a full page of white paper with horizontal dotted lines. The lines are evenly spaced and run across the width of the page, providing a guide for handwriting or typing. There are no margins, text, or other markings on the page.



—
abb.com/buildings

